



2009  
Annual Report

**The Way Forward**

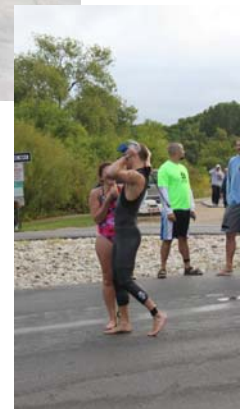


# Mission Statement

The Council on Alcohol & Other Drug Abuse of Washington County Promotes the responsible use of Alcohol, Tobacco and Other Drugs and increases Awareness of the negative effects of substance abuse.



# Fundraiser





2009



# Board of Directors

**President**

Steve Hoogester

**Vice President**

Toby Cotter

**Treasurer**

Doug Yip

**Secretary**

Jean Kontny

# Board Members

Julie Benedum, Mark Bensen,  
Maryjane Burge, Sue Burgard,  
Toby Cotter, Maureen Donahue,  
Matt Hadley, Steve Hoogester, Lisa Kiefer,  
Jean Kontny, Pam Monroe and Douglas Yip

# Council Staff

**Executive Director**

**Mary Simon**

Cheryl Boudreau-Albiero, Ronna Corliss,  
Linda Dymond, Lynn Gillian, Jeanne Gustafson,  
Lucinne Herrmann, Anita Hilleman, Diana Kirst  
and Larry Smikowski

# Executive Director's Report 2008-2009

**The Way Forward, One Individual, One Family,  
One Community at a Time**

## The Way Forward. . .

*In complicated economic times*

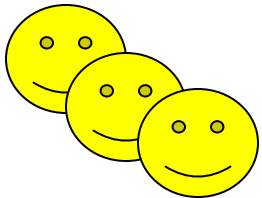
2009 was another challenging year for our world, country, state and county. Economic issues have created major stressors for individuals, families and communities. The Council, like every other non-profit sees and feels the impact of these crises both through the individuals that we serve and in our ability to garner the financial support that we need to continue to provide our needed services. We are confident that our country, our community and our organization will make it through these rocky times and will come out stronger as a result. We are proud of our accomplishments in 2009 and look forward to continuing to serve the community.

## Council on Alcohol & Other Drug Abuse Of Washington County, Inc. Balance Sheet 2008 - 2009

	2008	2009
<b>CURRENT ASSETS</b>		
Cash	69,923	5,633
Investment	128,257	239,617
Accounts Receivable	11,855	14,512
Prepaid Expenses	10,406	6,958
Prepaid Rent	2,000	2,000
<b>TOTALS</b>	<b>222,441</b>	<b>268,720</b>
Fixed Assets	1075	4,045
Less Accumulated Depreciation	<1075>	<1,323>
	-0-	2,722
<b>TOTAL ASSETS</b>	<b>222,441</b>	<b>271,442</b>
<b>CURRENT LIABILITIES</b>		
Accounts Payable	150	2,144
Deferred Revenues	140,278	73,899
Payroll Taxes	1,781	6,567
Accrued Retirement & Dental	876	934
<b>TOTAL LIABILITIES</b>	<b>143,085</b>	<b>83,514</b>
<b>NET ASSETS</b>		
Unrestricted	4,060	92,796
Temporarily Restricted	75,296	43,418
<b>TOTAL FUND BALANCE</b>	<b>79,356</b>	<b>51,714</b>
<b>TOTAL LIABILITIES &amp; FUND BALANCE</b>	<b>222,441</b>	<b>271,442</b>

Washington County Planning and Parks Development, Waukesha Symphony Orchestra, Community Memorial Hospital, Bill Meyers Photography, Pedal Moraine Cycle and Fitness, Expedition Supply, Woodridge Chiropractic, Kruepke Printing, West Bend Mutual Insurance Company Charitable Fund, West Bend - A Mutual Insurance Company, Meadow Creek Elk Farm, Hartford Saving Bank, MidCities Motor Sports, Klotz's Piggly Wiggly, Geidel's Piggly Wiggly, Hammer Nutrition, Road ID and 3 Anonymous Donors

## **Council Donors 2008 - 2009**



## **Council Volunteers. . .**

The Council on Alcohol & Other Drug Abuse of Washington County, Inc. would like to thank and acknowledge all of our volunteers from the various communities of Washington County.

**You are greatly appreciated.**

Thank You  
Council Staff and Board

## **The Way Forward, One Individual, One Family, One Community at a Time. . .**

### ***2009 Accomplishments. . .***

- ♥ Assisted 892 (an 8% increase from 2008) individuals in addressing their drinking and driving behavior and gain eligibility for a valid Driver's License
- ♥ Assisted 181 (an 8% increase from 2008) adolescents in evaluating their illegal use of alcohol or other drugs and increase their knowledge and skills to make responsible choices in the future
- ♥ Provided 22 alcohol and drug free social activities for 3,537 middle and high school students (a 16% increase from 2008)
- ♥ Assisted 18 school districts/private schools in implementing research based alcohol and drug abuse prevention programs
- ♥ Worked with 6 local law enforcement agencies to monitor retailers compliance with underage alcohol and tobacco purchase laws
- ♥ Worked with 4 local community coalitions and 1 county wide coalition to implement alcohol and drug prevention efforts. These coalitions involve nearly 300 people in their efforts

- ♥ Trained over 100 high school students to serve as Peer Listeners. These Peer Listeners reached out to over 4,112 other students
- ♥ Assisted over 40 families (a 62% increase from 2008) in learning more about addiction, assisting their loved one in getting treatment and improving the quality of their lives
- ♥ Provided educational programming for nearly 60 families and assisted them in developing rules and consequences that will help their child remain alcohol, tobacco and drug free
- ♥ Assisted Big Brothers/Big Sisters of Washington County in supporting girls with women mentors and providing programming targeting girls' special needs



## Council Donors. . . 2008-2009

Target, Costco, Sam's Club, Rogers Memorial Hospital, Glacier Hills Credit Union, westbury bank, Hannah & Logan (STARS Class), American Legion, Frederick Kaftan, Mr. & Mrs. Alvis Tillou, Germantown Peers, Maryjane Burdge, Washington County Human Services Department, Suder-Pick Foundation, Walmart, Adventure Rock, Barnes & Noble Mayfair, Best Buy Menomonee Falls #757, Cherry Auto, Comedy Sportz, Council on AODA, County Market, Hartford Cousins, Hartford Culvers, Dave's Lanes, Domino's Pizza, First Bank Financial Center of Hartford, Fun World, George Webb Restaurant, Germanfest, Green Bay Packers, Hartford K- Mart, Hartford Little Ceasar's, Hartford Rec Dept, Hartford Savings Bank, Hartford Theater, Hartford Women's Club, Komp Brothers, Kwik Trip, Marquette University, McDonalds, Mickey's Fresh Frozen Custard, Milwaukee Admirals, Milwaukee Ballet, Milwaukee Brewers, Milwaukee Bucks, Milwaukee Mile, Milwaukee Public Museum, Milwaukee Symphony Orchestra, Milwaukee Wave Professional Soccer, Mine shaft, Paintball Dave's, Panera Bread, Perc Place, Pioneer Bowl, Hartford Pizza Hut, Play N Trade, Ponderosa, Schauer Arts & Activities Center, Sprecher Brewing Co., Inc., Sprecher Brewing Company, Stop-N-Go, Hartford Subway, University Wisconsin Extension,

Donor List Continued to next page